

Space around the door and seat

SILL HEIGHT

To ground	401mm
To floor of car	level



DOOR OPENING ANGLE

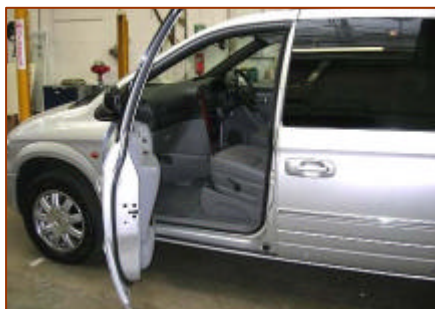
Opening angle, including door pocket 56 degrees

SIZE OF DOOR OPENING

Width at the bottom	840mm
Width in the middle	849mm
Height 200mm from back	1115mm
Height 400mm from back	1064mm

DASHBOARD AND FASCIA

	Passenger	Driver
How far sticks out beyond door	110mm	153mm
Height of rear projection	589mm	540mm



LEGROOM

	Passenger	Driver
Seat back to footwell (max)	1163mm	1171mm

SPACE AROUND THE SEAT

	Passenger	Driver
Back of seat to A post	964mm	976mm
Seat to sill	190mm	190mm
Seat to A post (fully forward)	292mm	299mm
Seat to A post (fully back)	445mm	452mm



Seat back to steering wheel (min)	236mm
Seat back to steering wheel (max)	512mm
Seat to steering wheel – Position 1	210mm
Seat to steering wheel – Position 2	90mm
Seat to steering wheel – Position 3	90mm

EDGE OF SEAT TO GROUND

	Passenger	Driver
Seat edge to ground (min)	818mm	801mm
Seat edge to ground (max)	818mm	840mm

HEADROOM

	Passenger	Driver
When getting in	650mm	676mm
When inside	935mm	958mm

DOOR AND GRAB HANDLES

	Passenger	Driver
Interior door catch	finger pocket	finger pocket
Roof grab handle	none	none
Seat back	lever	wheel
	LHS	RHS

Carrying space in the boot or hatch

SILL HEIGHT

To ground	619mm
To floor of car	286mm

WIDTH OF OPENING

Width at bottom	1285mm
Width in the middle	1291mm
Width at top	1031mm

HEIGHT OF OPENING

Top to bottom	992mm
Roof to floor	1219mm



FLOOR LENGTH

Back row fully upright	590mm
Back row folded	1354mm
Back and middle row folded	2320mm

FLOOR WIDTH

Width at narrowest point	1055mm
--------------------------	--------

FITTING IN A FOLDED WHEELCHAIR

Back row of seats upright

<i>Parcel shelf in place</i>	
wheelchair flat	facing sideways only
wheelchair standing	facing sideways only

<i>parcel shelf removed</i>	
wheelchair flat	facing sideways only
wheelchair standing	facing sideways only

Back row of seats folded

wheelchair flat	yes
wheelchair standing	yes

Back and middle row of seats folded

wheelchair flat	yes
wheelchair standing	yes

FITTING IN AN UNFOLDED WHEELCHAIR

Back row of seats upright

<i>parcel shelf in place</i>	no
------------------------------	----

<i>parcel shelf removed</i>	no
-----------------------------	----

Back row of seats folded	yes
---------------------------------	-----

Back and middle row of seats folded	yes
--	-----